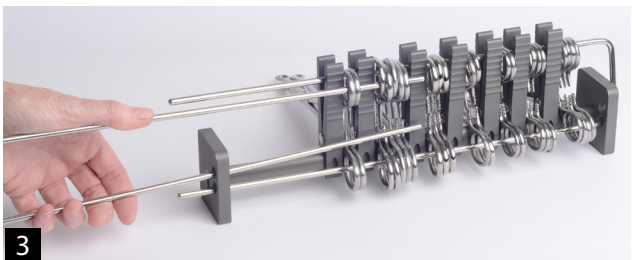
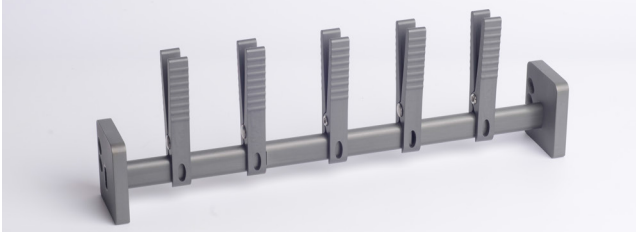




# "In Queue" Assembly and Use Instructions



## Arranging instruments on "In Queue"

- Place the stand on a flat solid surface.
- The two **oval holes** located on the sides of the stand identify the back of the stand.
- Place the stand in front of you with the holes to the back.
- Place the clips on the stand, spacing them out.
- Make sure your ring handle instruments are open not clamped.
- Using the clips to divide the instruments, separate instruments into groups of one or groups of two such as mosquitoes' and hemostats, arranging from smallest to largest.

## Stringing the instruments onto the stand

Just as there are multiple ways to use the stand there are multiple ways to string the stand. It is all about your comfort level.

The length and thickness of the stringer rods will affect how smoothly the process goes; therefore, we suggest using Dieble Surgical U- rods to ensure the smoothest possible outcome.

Placing pressure on the U-shape stringer rods will allow you to decrease and increase the wideness of the rod allowing you to navigate through the various size of instruments.

**In Central processing or Central sterilization**, you will always use two stringer rods to assure the tips of the instruments are open to their maximum

When working at the surgical field you can use one rod strung through the bottom hole going into both upper and lower handles as outlined in step 1.

### Step 1-

Going to the side with the smallest instruments, taking the stringer rod through the bottom oval opening, apply pressure with your hand to the stringer rod to navigate the rod through the **top and bottom** ring handled instruments. You may work the rod either through the middle of the clips or to the outside of the clips whichever is easier. As you make your way toward the larger instruments you will be able to relax the pressure on the stringer allowing it to naturally string through securing it in the bottom hole of the opposite end of the stand.

### Step 2-

Next go to the side with the largest instruments. Using the top oval hole, apply slight pressure to the U- shape stringer rod and slide the rod through the hole into the top of the ring handled instrument.

The bottom of the rod should run across the tops **not inside** the bottom ring handle instrument.

### Step 3-

You may find it easier to run the rod to the outside of the clips instead of the middle. When you come to the end lift the rod and place it in the middle of the clips or leave it outside.

Make sure the end of the rod goes into the top hole located on the opposite side of the stand.

- If you feel resistant it could be because the rod has hit the edge of the ring handle.
- Because there are still clamps clipped shut
- Because you have slid the rod cross the jaws of the clamps

Slide the rod back and push the ring handle forward to help align them

**To view video instructions go to [www.dieblesurgical.com](http://www.dieblesurgical.com)**